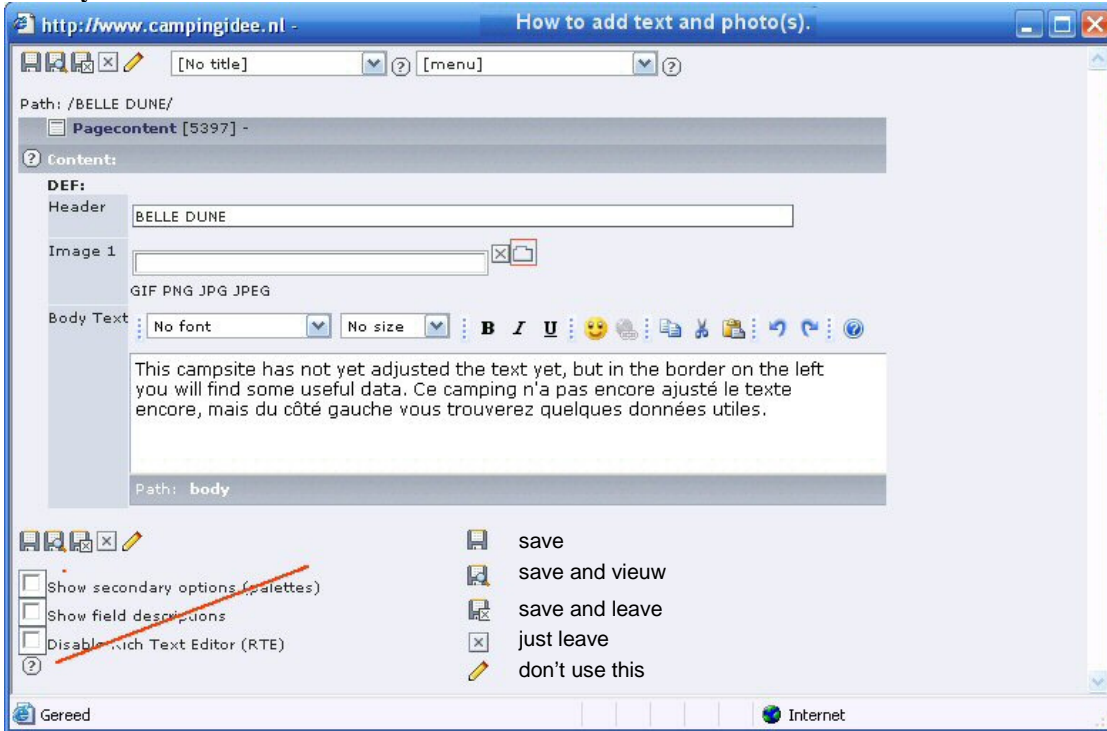
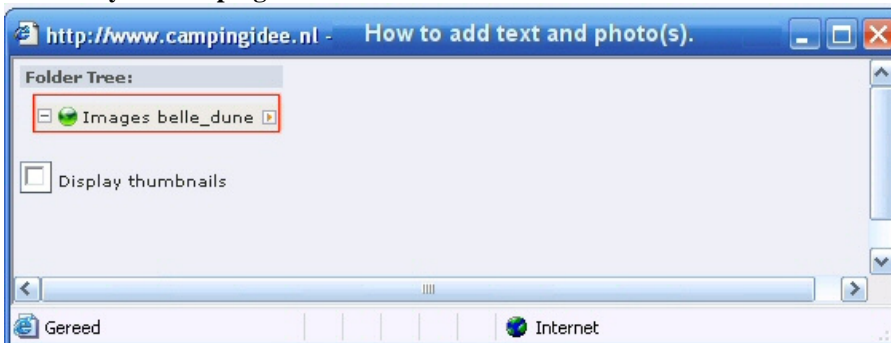


- A- Add your campsite and you receive a login name and password.
- B- Now you log in and arrive at this page: “**change your information**”.  
If not please click again on ‘log on’.
- C- Then you click on a language-link. Then you will see this:

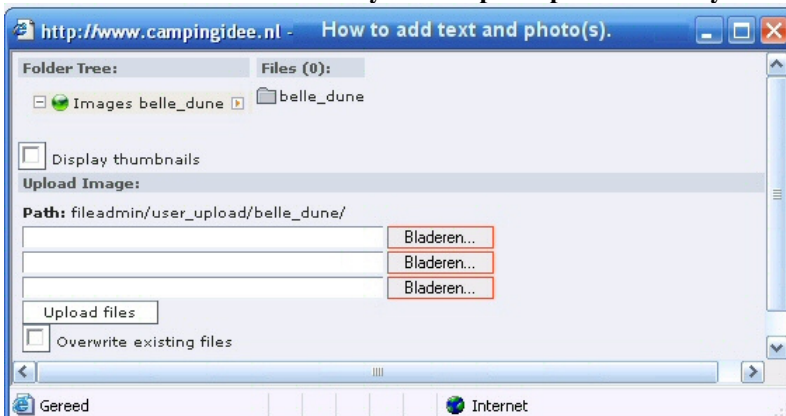
**1 - Fill in your text and click the red icon.**



**2 - Click on your camping name.**



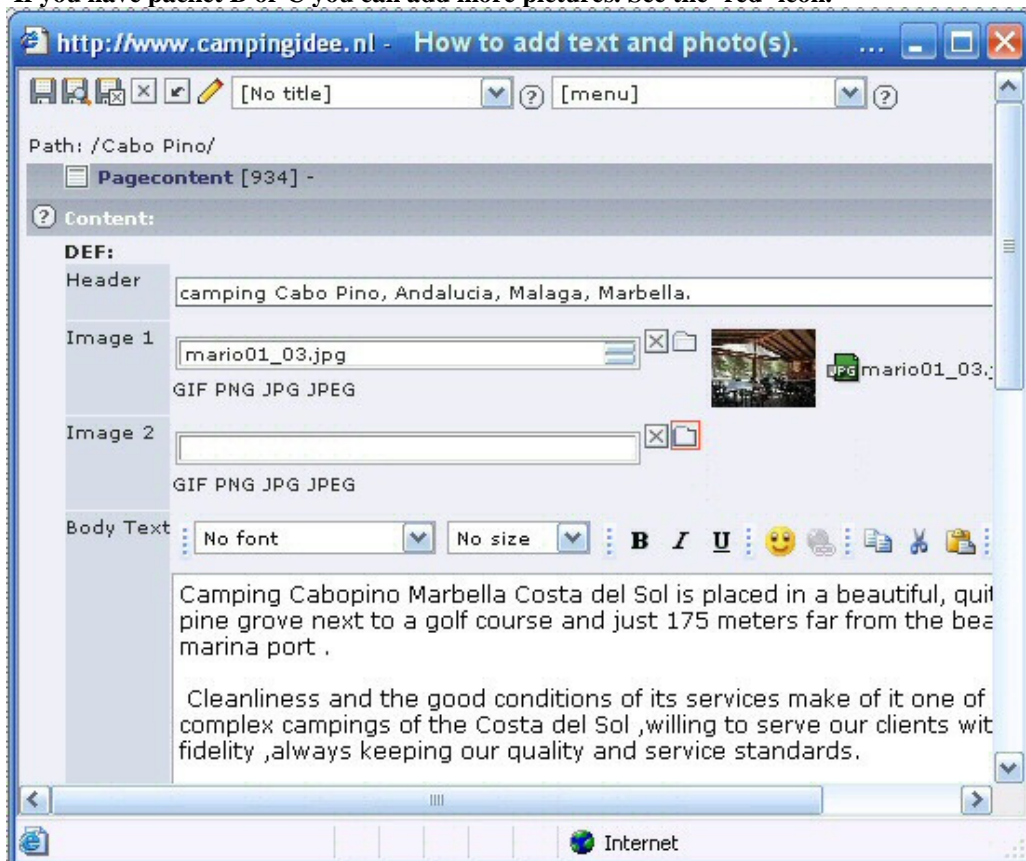
**3 - Now click one red button. Now you can upload pictures from your computer.**



4 – The picture is uploaded. Now click the picture.



5 - After clicking the picture, you arrive at the first page.  
If you have packet B or C you can add more pictures. See the 'red' icon.



6 – After clicking the red icon you see this page.  
Click on the second picture and you return to the first page again!

